

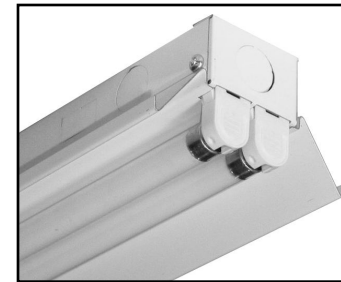
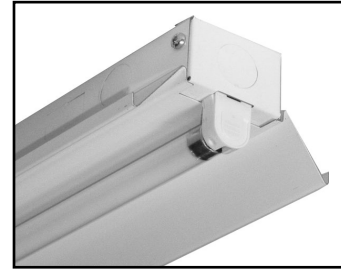
Symmetric Reflector **SV5R Series**

Page 1 of 2

White or Specular for 1 or 2 Lamp T5 Strip, 22", 34" or 46" Lengths,

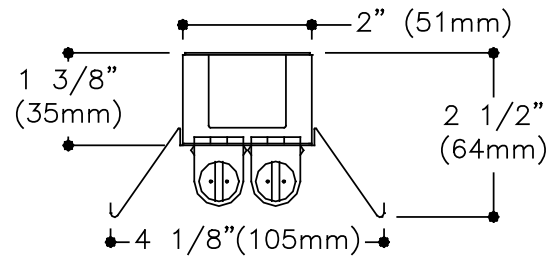
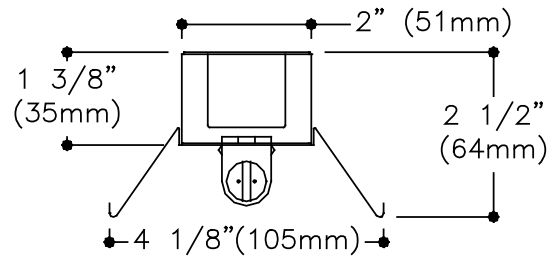
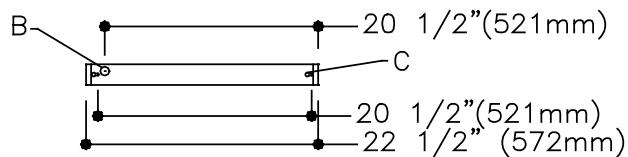
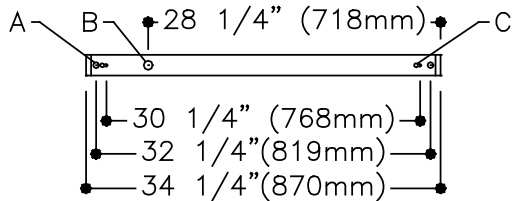
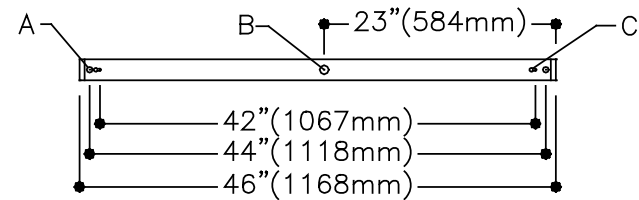
Features

- Only 1 3/8" deep.
- Installation on regular SV T5 strip, 1 or 2 lamps.
- Available in white or high reflectivity specular finish.
- Optional micro-perforated or slotted white reflector.



Dimensions

A: 9/16" (14mm) K.O.
 B: 7/8" (22mm) K.O.
 C: CARRIAGE SLOT



Job Information

Type:

Job Name:

Cat. No.:

Lamp(s):

Volts/Ballast:

Lightolier a Genlyte Thomas Company

www.lightolier.com

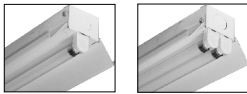
Technical Information: (978) 657-7600 • Fax (978) 658-0595

631 Airport Road, Fall River, MA 02720 • (508) 679-8131 • Fax (508) 674-4710

We reserve the right to change details of design, materials and finish.

Copyright 2002 Lightolier

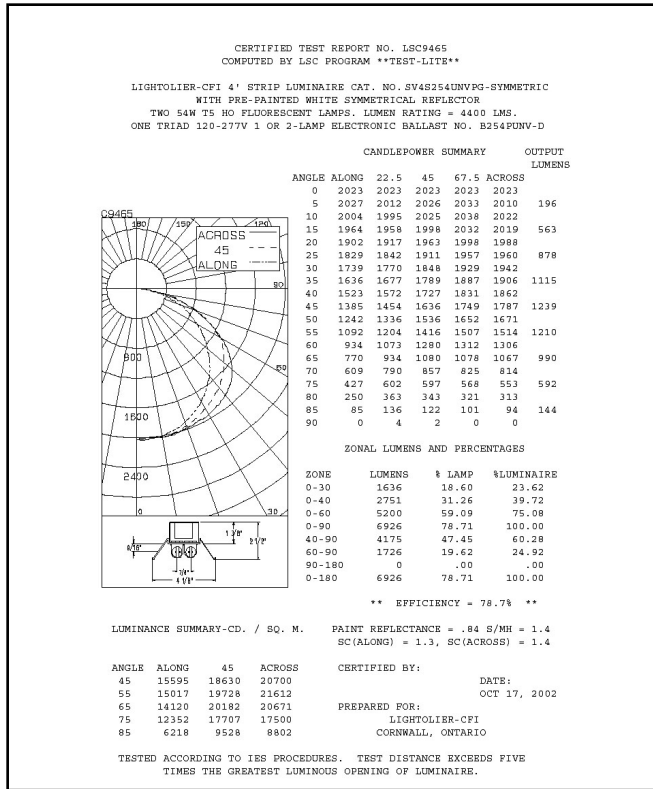
Section 3A/Folio H120-22



Symmetric Reflector **SV5R Series**

Photometry

Model No. SV4S254UNVPG/SV5R1W4SSLD



LIGHTING SCIENCES CANADA LTD.
440 PHILLIP ST., UNIT 19
WATERLOO, ONTARIO

CERTIFIED TEST REPORT NO. LSC9465
COMPUTED BY LSC PROGRAM **TEST-LITE**

LIGHTOLIER-CFI 4' STRIP LUMINAIRE CAT. NO. SV4S254UNVPG-SYMMETRIC
WITH PRE-PAINTED WHITE SYMMETRICAL REFLECTOR
TWO 54W T5 HO FLUORESCENT LAMPS. LUMEN RATING = 4400 LMS.
ONE TRIAD 120-277V 1 OR 2-LAMP ELECTRONIC BALLAST NO. B254PUNV-D

COEFFICIENTS OF UTILIZATION
ZONAL CAVITY METHOD
EFFECTIVE FLOOR CAVITY REFLECTANCE = .20

CC WALL	80	70	50	30	10	0
70	50	30	10	70	50	30
10	50	30	10	50	30	10
50	30	10	50	30	10	50
30	10	50	30	10	50	30
10	50	30	10	50	30	10
50	30	10	50	30	10	50
30	10	50	30	10	50	30
10	50	30	10	50	30	10

RCR

0	.94	.94	.94	.92	.92	.92	.92	.87	.87	.87	.84	.84	.84	.80	.80	.80	.79
1	.86	.82	.79	.76	.84	.80	.77	.74	.77	.74	.72	.74	.72	.70	.71	.69	.68
2	.78	.71	.66	.62	.76	.70	.65	.61	.67	.63	.59	.65	.61	.58	.62	.59	.57
3	.71	.63	.56	.51	.69	.61	.56	.51	.59	.54	.50	.57	.53	.49	.55	.51	.48
4	.65	.55	.48	.43	.63	.54	.48	.43	.52	.47	.42	.50	.46	.42	.49	.45	.41
5	.59	.49	.41	.36	.57	.48	.41	.36	.46	.40	.35	.44	.39	.35	.43	.38	.34
6	.54	.43	.36	.31	.52	.42	.36	.31	.41	.35	.30	.40	.34	.30	.38	.33	.30
7	.50	.39	.32	.27	.48	.38	.31	.26	.37	.30	.26	.35	.30	.26	.35	.30	.26
8	.46	.34	.28	.23	.44	.34	.27	.23	.33	.27	.23	.32	.26	.22	.31	.26	.22
9	.42	.31	.24	.19	.41	.30	.24	.19	.29	.23	.19	.29	.23	.19	.28	.23	.19
10	.39	.28	.21	.17	.38	.28	.21	.17	.27	.21	.17	.26	.21	.17	.25	.20	.17

DETERMINED IN ACCORDANCE WITH CURRENT IES PUBLISHED PROCEDURES
LUMINAIRE INPUT WATTS = 115.0
LABORATORY RESULT MAY NOT BE REPRESENTATIVE OF FIELD PERFORMANCE.
BALLAST FACTORS HAVE NOT BEEN APPLIED.

Ordering Information

Explanation of Catalog Number. Example: SV5R1W4SSLD

SV5R

Reflector Type

Reflector for SV7S Strip
(order strip separately)

1

Reflector Style

[]

Finish

W = White
S = Specular

[]

Reflector Length

2 = 22"
3 = 34"
4 = 46"

S

Light Distribution

S = Symmetric

[]

Reflector Style:

SLD = Solid
SLT = Slotted (white only)
PER = Micro-perforated (white only)

Options & Accessories

Wire Guard: White wire guard to work with SV5 Symmetric reflector. Catalog number **SV5G1W3S** for 34" Symmetric Reflector; **SV5G1W4S** for 46" Symmetric Reflector.

Specifications

Materials: Die-formed heavy gauge cold rolled steel.

Reflector: White - phosphate undercoating, baked white acrylic matte high reflectance paint finish. **Specular** - Reflective plane made of high purity aluminium, total reflectivity of 95% without iridescence.

Job Information

Type:

Lightolier a Genlyte Thomas Company

www.lightolier.com

Technical Information: (978) 657-7600 • Fax (978) 658-0595

631 Airport Road, Fall River, MA 02720 • (508) 679-8131 • Fax (508) 674-4710

We reserve the right to change details of design, materials and finish.

Copyright 2002 Lightolier

Section 3A/Folio H120-22

LIGHTOLIER